



2008 Florida Youth Substance Abuse Survey Press Conference

William H. Janes

Florida Office of Drug Control

November 10, 2008

Methodology

- Survey administration: March to May of 2008
- Sampling strategy: Schools were selected to generate both state- and county-level estimates
- Students surveyed in 66 out of 67 counties
- Final sampling size: 91,471 students across grades 6 through 12
- Margin of error less than 1.0 percentage point

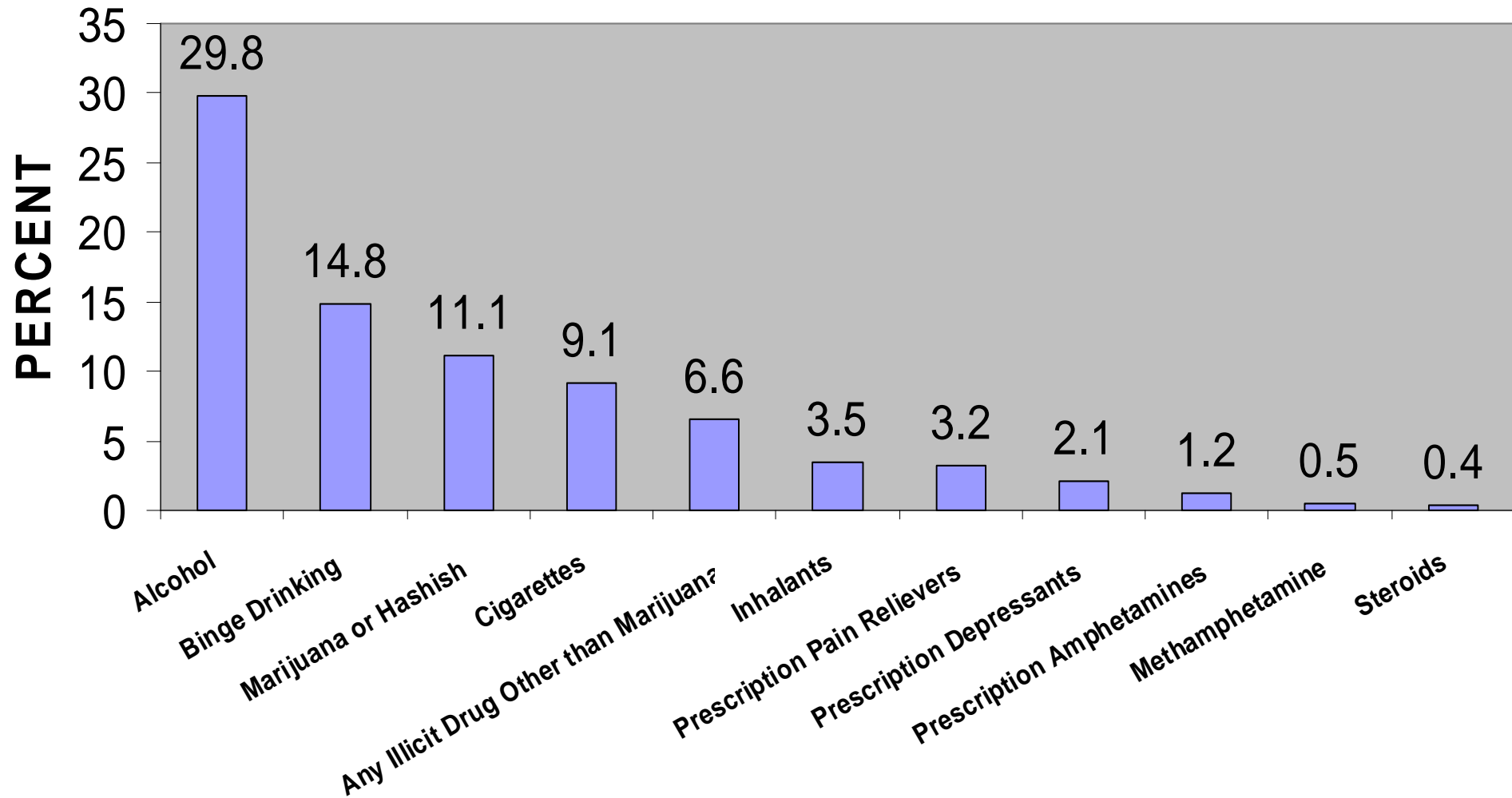
History

- Survey first administered in 2000
- Results compiled by Rothenbach Research and Consulting firm
- Even years: All counties surveyed for county-level results
- Odd years: Select number of counties surveyed for state-level results
- Survey administered to Florida public school students in grades 6 - 12

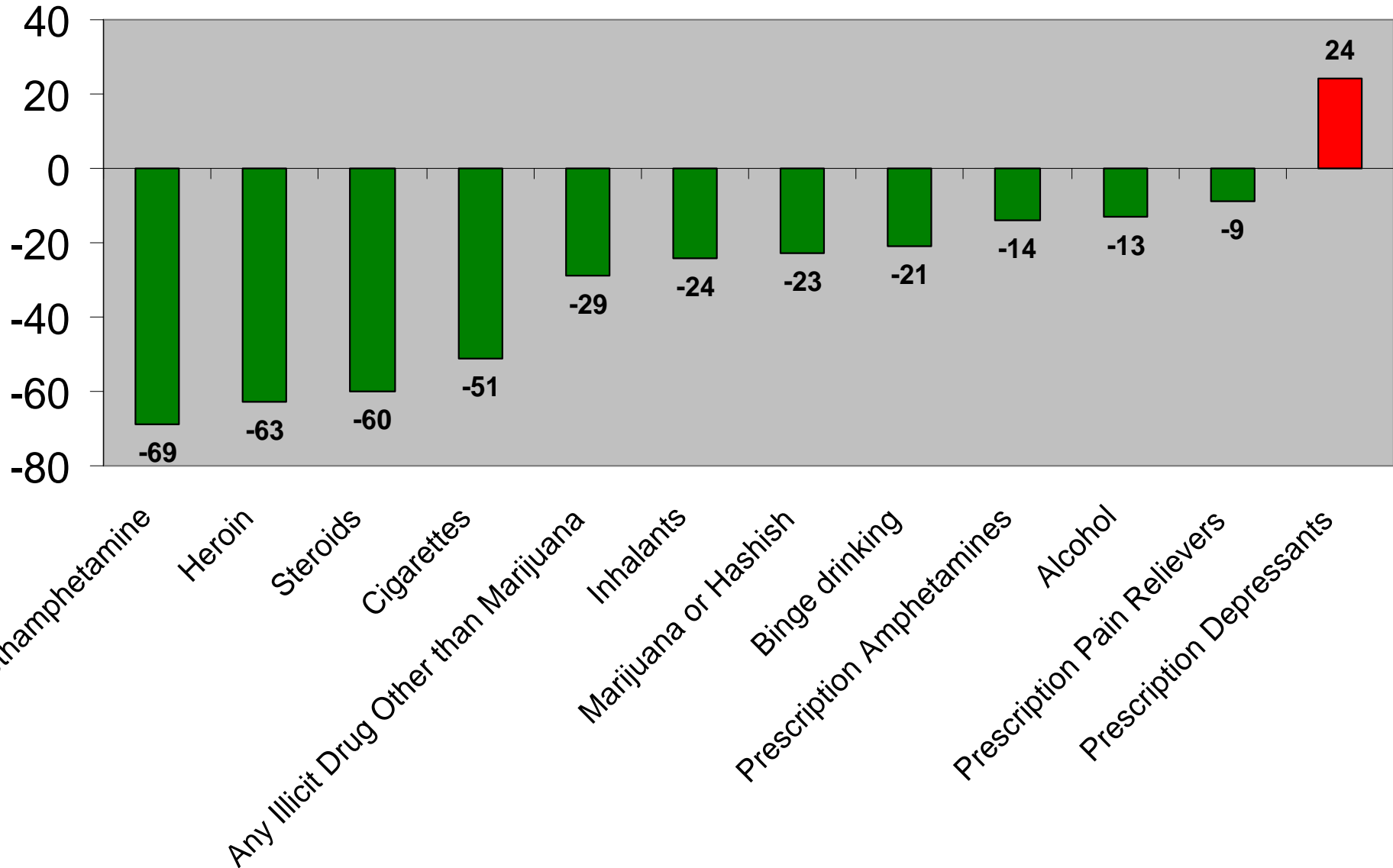
Survey Validation

- 6,446 students (6.6% of respondents) identified and eliminated from inclusion in final results by one or more of four validation tests:
 - Alcohol, tobacco, and other drugs (ATOD) exaggeration – 2,774
 - Antisocial behavior exaggeration – 1,380
 - Inconsistency – 2,995
 - Fictitious drug – 4,015

Percentage of Florida's Middle and High School Students Reporting Past 30-Day Use of Various Drugs (2008)



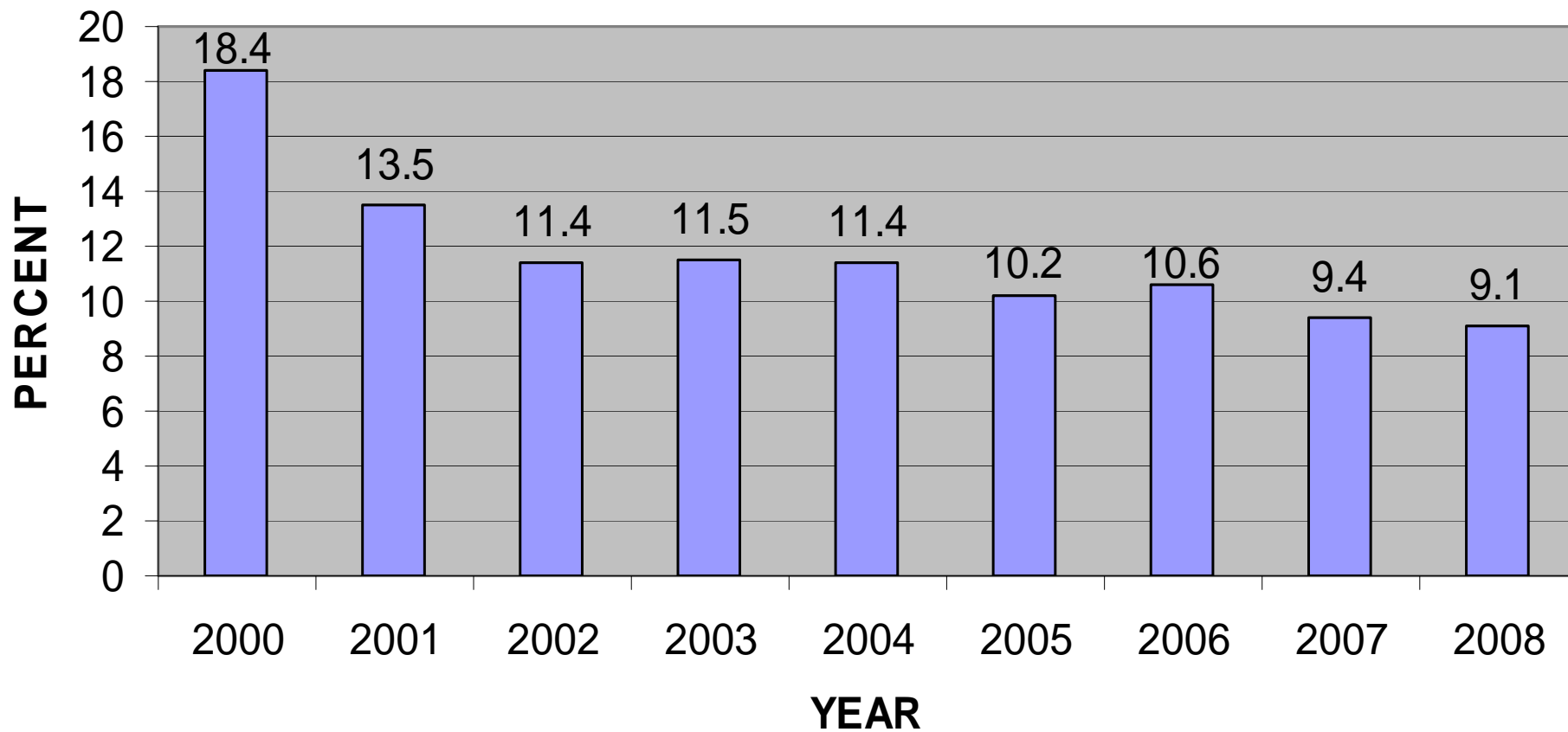
Percent Change in Past 30-Day Use Among Middle and High School Students (2000-2008)



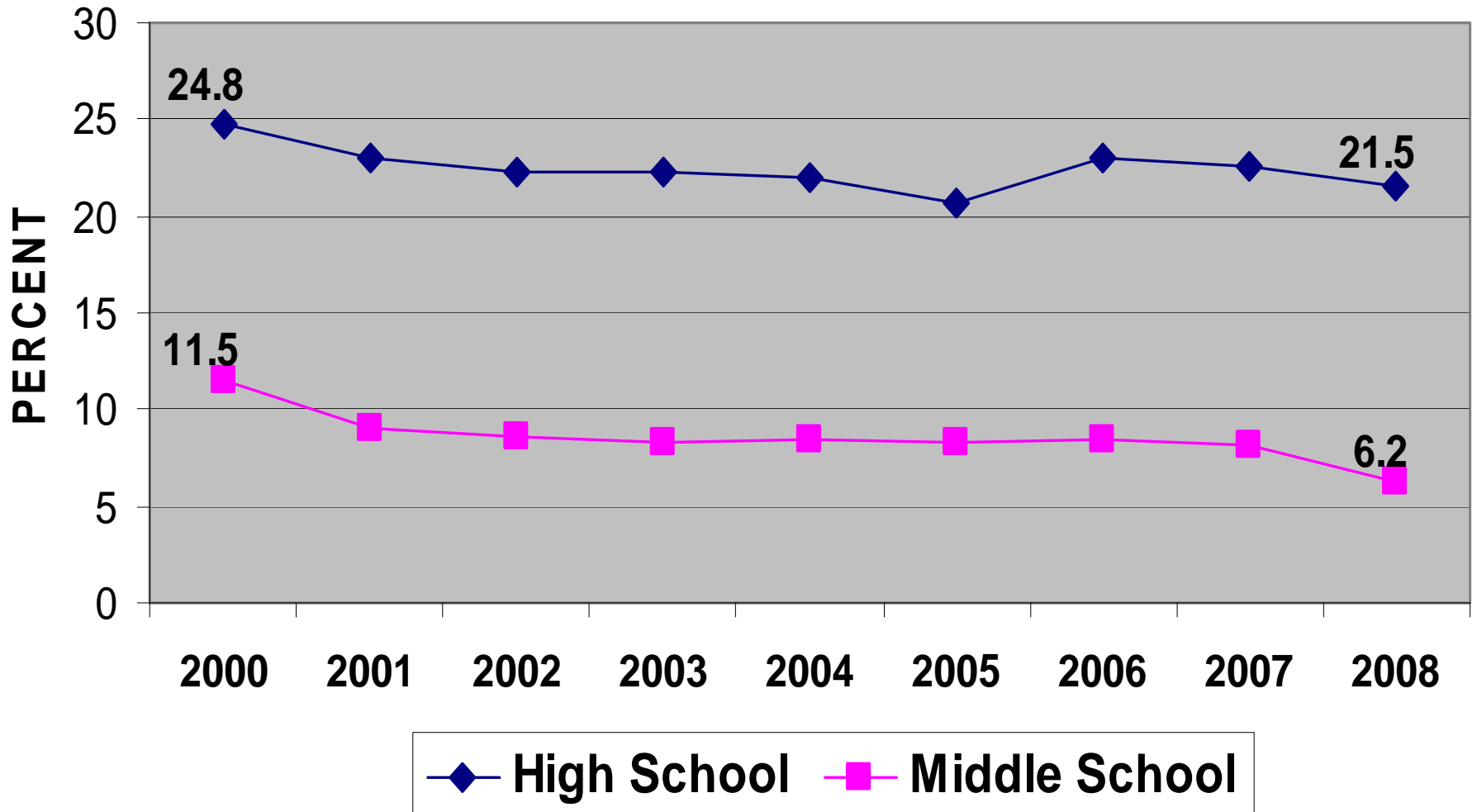
Past 30-Day Prevalence (2000 – 2008)

	Past 30-Day Use (2008)	2000-08 Percentage Point Change	2000-2008 Percentage Change
Alcohol	29.8%	▼ 4.5	▼ 13.1%
Binge Drinking	14.8%	▼ 4.0	▼ 21.2%
Marijuana or Hashish	11.1%	▼ 3.3	▼ 22.9%
Cigarettes	9.1%	▼ 9.3	▼ 50.5%
Any Illicit Drug Other Than Marijuana / Hashish	6.6%	▼ 2.7	▼ 29.0%
Inhalants	3.5%	▼ 1.1	▼ 23.9%
Prescription Pain Relievers	3.2%	▼ 0.3	▼ 8.5%
Prescription Depressants	2.1%	▲ 0.4	▲ 23.5%
Prescription Amphetamines	1.2%	▼ 0.2	▼ 14.2%
Methamphetamine	0.5%	▼ 1.1	▼ 68.7%
Steroids (Without Dr.'s Orders)	0.4%	▼ 0.6	▼ 60.0%
Heroin	0.3%	▼ 0.5	▼ 62.5%

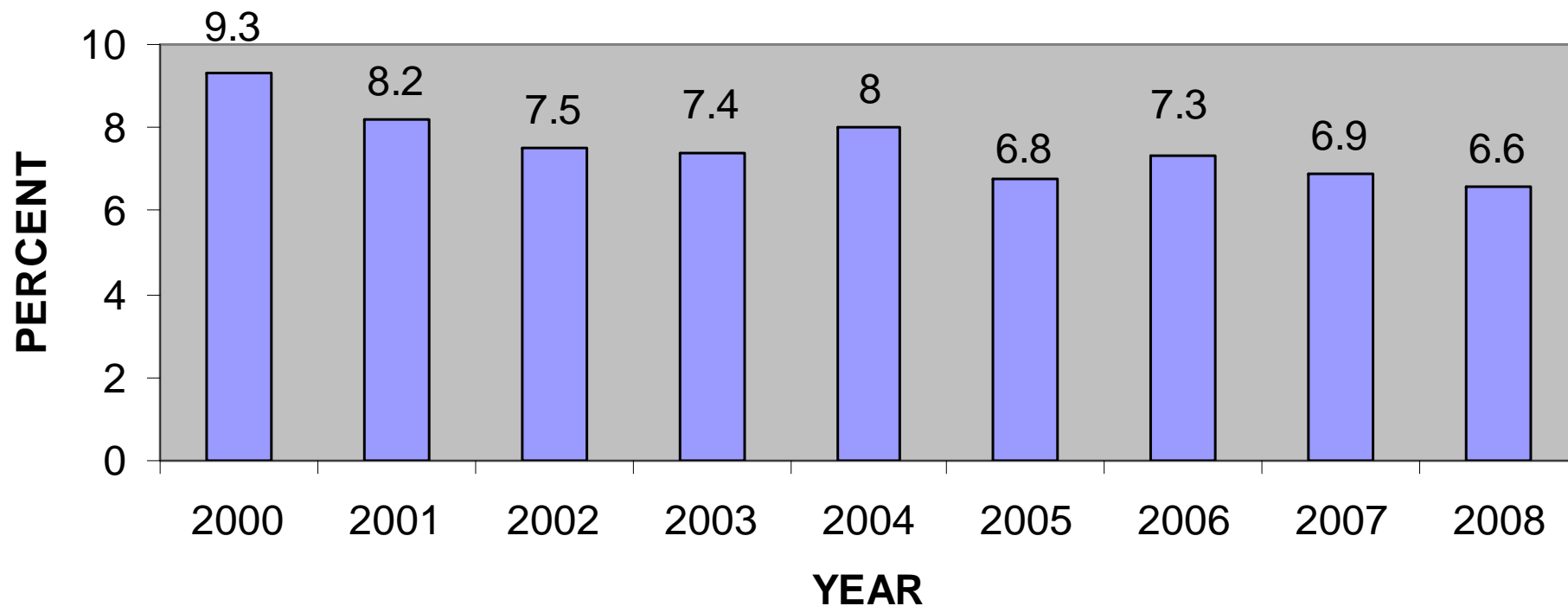
Percentage of Florida's Middle and High School Students Reporting Past 30-Day Cigarette Use



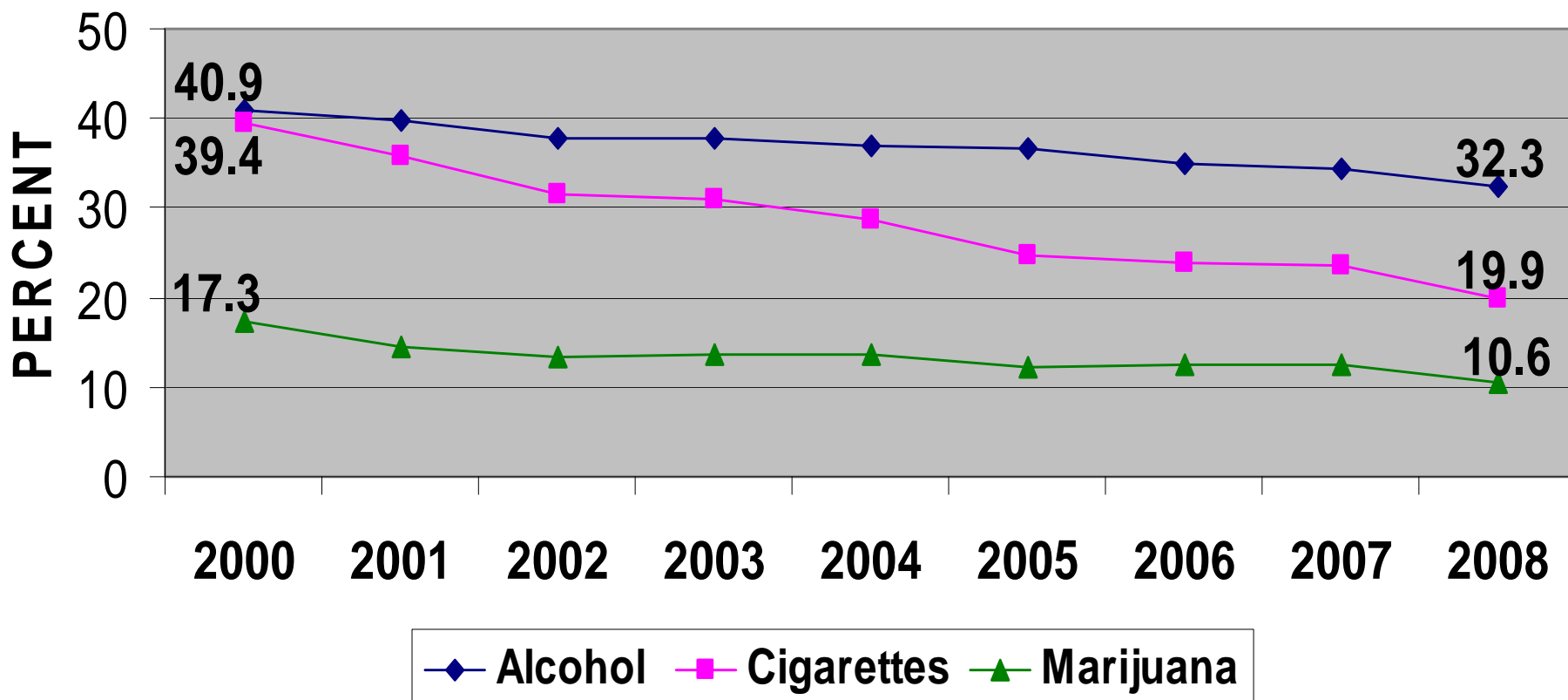
Binge Drinking in Past Two Weeks (2000-2008)



Percentage of Florida's Middle and High School Students Reporting Past 30-Day Use of *Any Illegal Drug Other than Marijuana or Hashish*

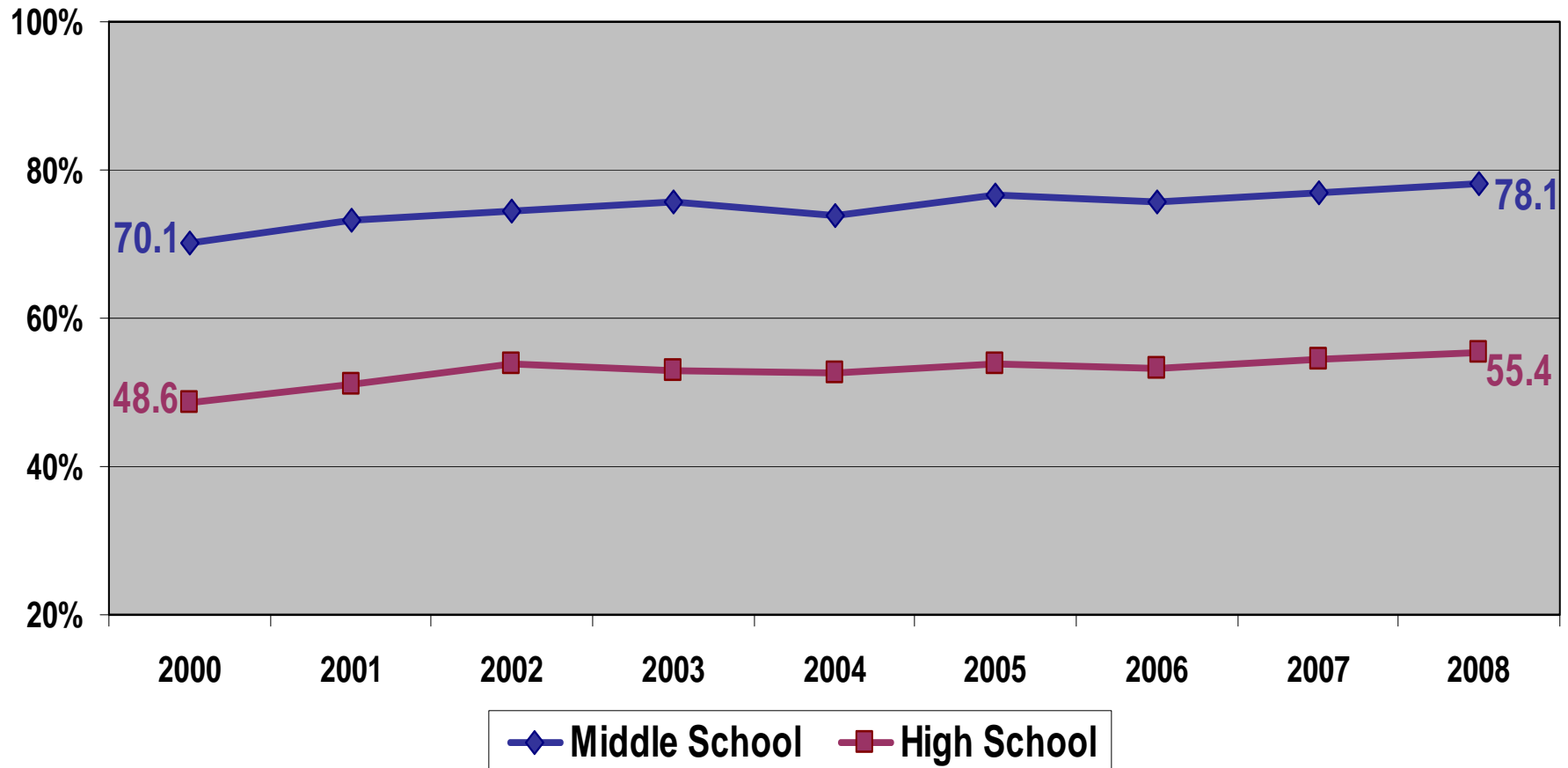


Trends in Early Initiation: Percentage of Florida High School Students that First Used Before Age 14



Students Reporting No Alcohol, Tobacco, or Other Drug Use in the Past 30 Days

Prevalence by Grade Cohort

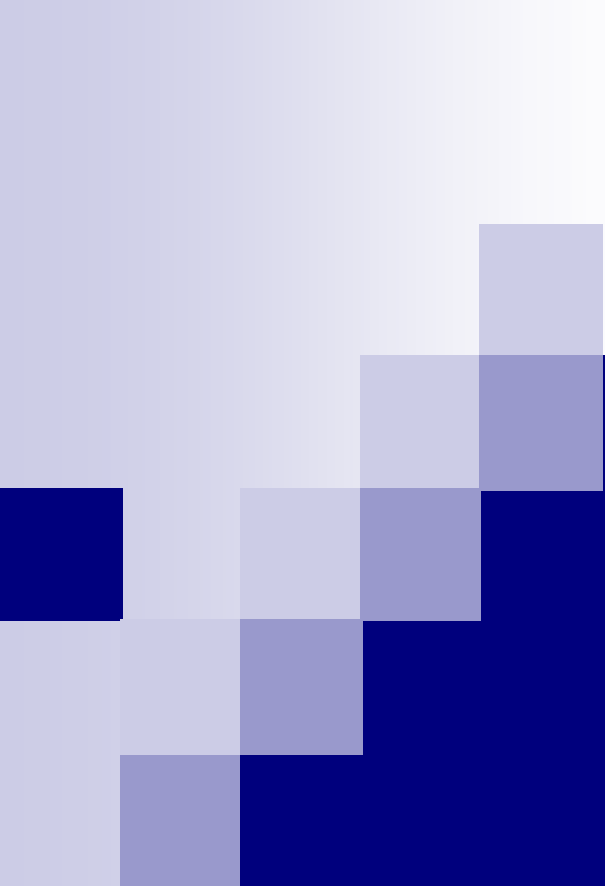


Percentage of Florida's 8th Graders Reporting Use of Various Substances (2008)

<u>SUBSTANCE</u>	<u>PAST 30-DAY PREVALENCE</u>
Inhalants	5.2%
Over-The-Counter Drugs	3.3%
Prescription Pain Relievers	3.1%
Prescription Depressants	1.8%
LSD, PCP, or Mushrooms	1.0%
Club Drugs	0.9%
Cocaine or Crack	0.9%
Prescription Amphetamines	0.8%
Methamphetamine	0.6%
Steroids	0.4%
Heroin	0.4%

Percentage of Florida's 12th Graders Reporting Use of Various Substances (2008)

<u>SUBSTANCE</u>	<u>PAST 30-DAY PREVALENCE</u>
Prescription Pain Relievers	4.5%
Depressants (like Xanax)	3.8%
Ecstasy	2.1%
Prescription Amphetamines	1.9%
Cocaine	1.9%
Inhalants	1.9%
Hallucinogenic Mushrooms	1.8%
LSD or PCP	1.2%
Methamphetamine	0.5%
Rohypnol	0.5%
GHB	0.3%
Ketamine	0.2%
Heroin	0.2%



**To view the full
report, please visit
the FYSAS website**

www.dcf.state.fl.us/mentalhealth/publications/fysas/